

BARBERSHOP BASICS #4

Dues & Membership

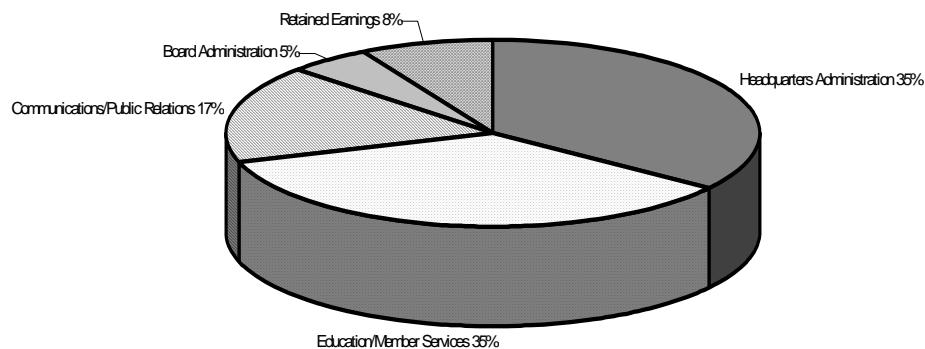
What, I have to pay dues?? Yes, in order to belong to this glorious organization you do have to pay dues. There are three levels of dues – International, Regional and Local (your own chapter/chorus). The International and Regional dues are (normally) paid annually and the local dues are monthly.

There are also several types of membership levels:

- Associate – A member who cannot participate fully in chapter activities, a non-performing member
- Youth – A member who is 25 years old or younger
- CAL (Chapter-At-Large) – A member who is not affiliated with any local chapter who may perform and compete with a quartet
- MAL (Member-At-Large) – A member who is not affiliated with any local chapter or region and may not perform/compete with a quartet
- Dual – A member who wishes to be a member of more than one chapter
- Lifetime – A member who has paid a lump sum (see our website for specifics) and will no longer have to pay any International dues for the duration of her life.
- Full Member – A member who is affiliated with one chapter and, as long as she is in good standing, may perform and compete with that chapter

Each of the above member types has its own set of dues. There is a Per Capita Fee that is due to International Headquarters, \$6 (USD) of which goes toward a one-year subscription to *The Pitch Pipe* publication. You can see this information on your application for membership. Youth members pay half of what an adult member pays.

Breakdown of Dues Paid By Members of
Sweet Adelines International



Your dues provide approximately 50% of all gross revenue needed to fund the expenses and to provide a reserve for any unexpected expenses.

Regional dues, called regional assessments, vary per region. These dues help to cover operating expenses like the regional newsletter, partial funding of educational events, competition, workshops, and other items based on the region's needs. Chapters differ in how they collect these dues. Many will collect the dues at the same time that the international dues are due. Some set up escrow dues payments and the members pay a monthly amount, which includes international, regional and chapter dues. Then, when the bill comes in, the money is available and no one has to dig too deeply into their pockets at one time.

Are all chapter dues the same? No, each chapter sets its dues to cover its expenses. As we know, most chapters have to pay a rental fee for space and riser storage, others may not. Some chapters will have an education budget, which may include costs for music, coaching, educating their director, etc. Your chapter dues will include the cost of the director's fee and many more items. All of this depends on the business plan the chapter puts together for itself. No chapter wants to stretch the finances of its members any further than absolutely necessary. To find out about your chapter dues and how the money is allocated, please ask your treasurer or financial officer for a time to discuss this.

This hobby of ours has costs associated with it as do all other hobbies. The value you get out of it will hopefully outweigh the cost you have to put into it. That's the 'enjoyment factor'.